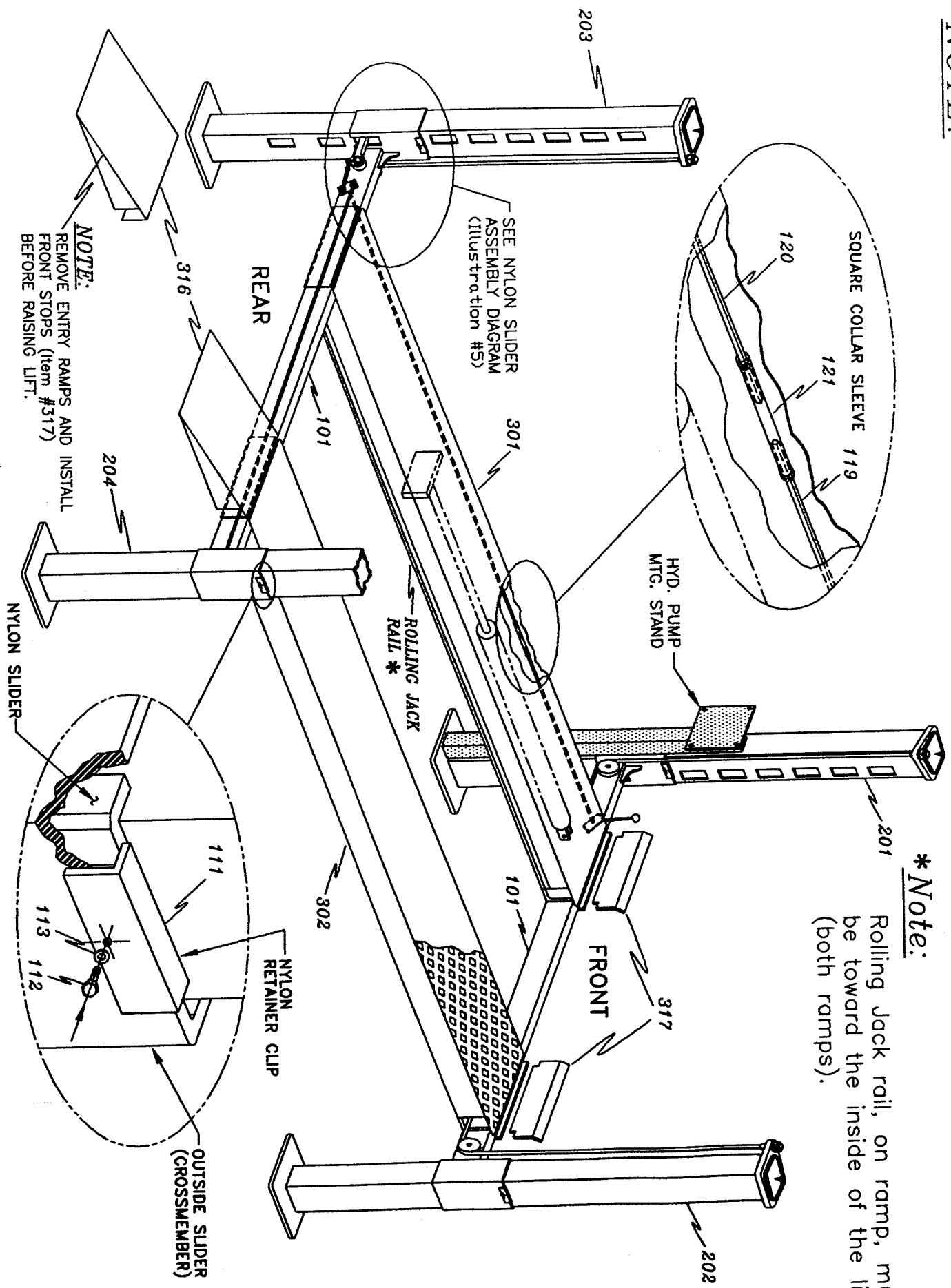


NOTE: IF YOU HAVE A "ROLLING JACK PLATFORM" or "HYDRAULIC JACK PLATFORM" - SEE ILLUSTRATIONS 12, 12A & 12B BEFORE ASSEMBLY.

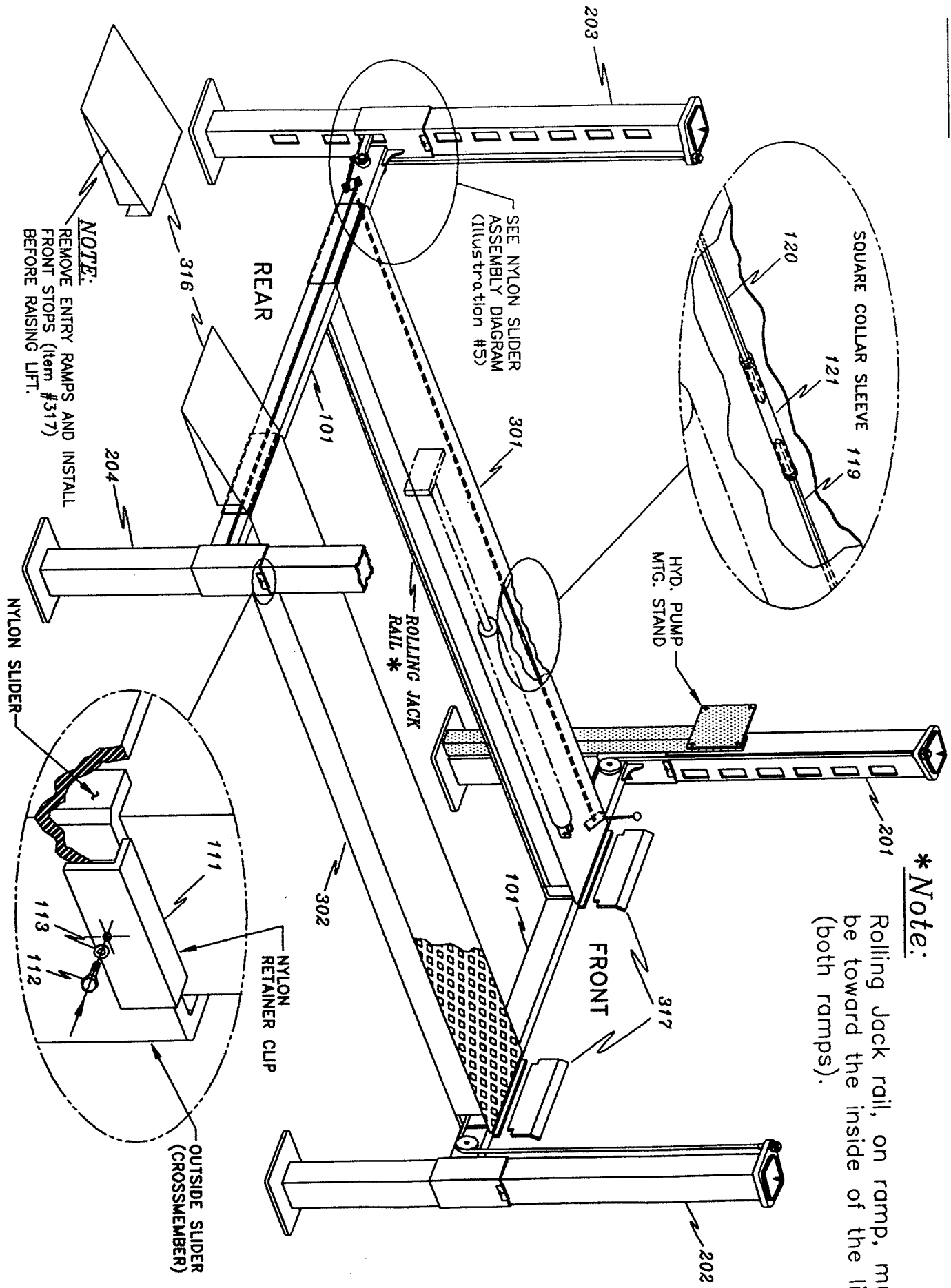
***Note:**
 Rolling Jack rail, on ramp, must be toward the inside of the lift. (both ramps).



7000# STANDARD LIFT DIAGRAM (ASSEMBLED) - ILLUSTRATION #1

NOTE: IF YOU HAVE A "ROLLING JACK PLATFORM" or "HYDRAULIC JACK PLATFORM" - SEE ILLUSTRATIONS 12, 12A & 12B BEFORE ASSEMBLY.

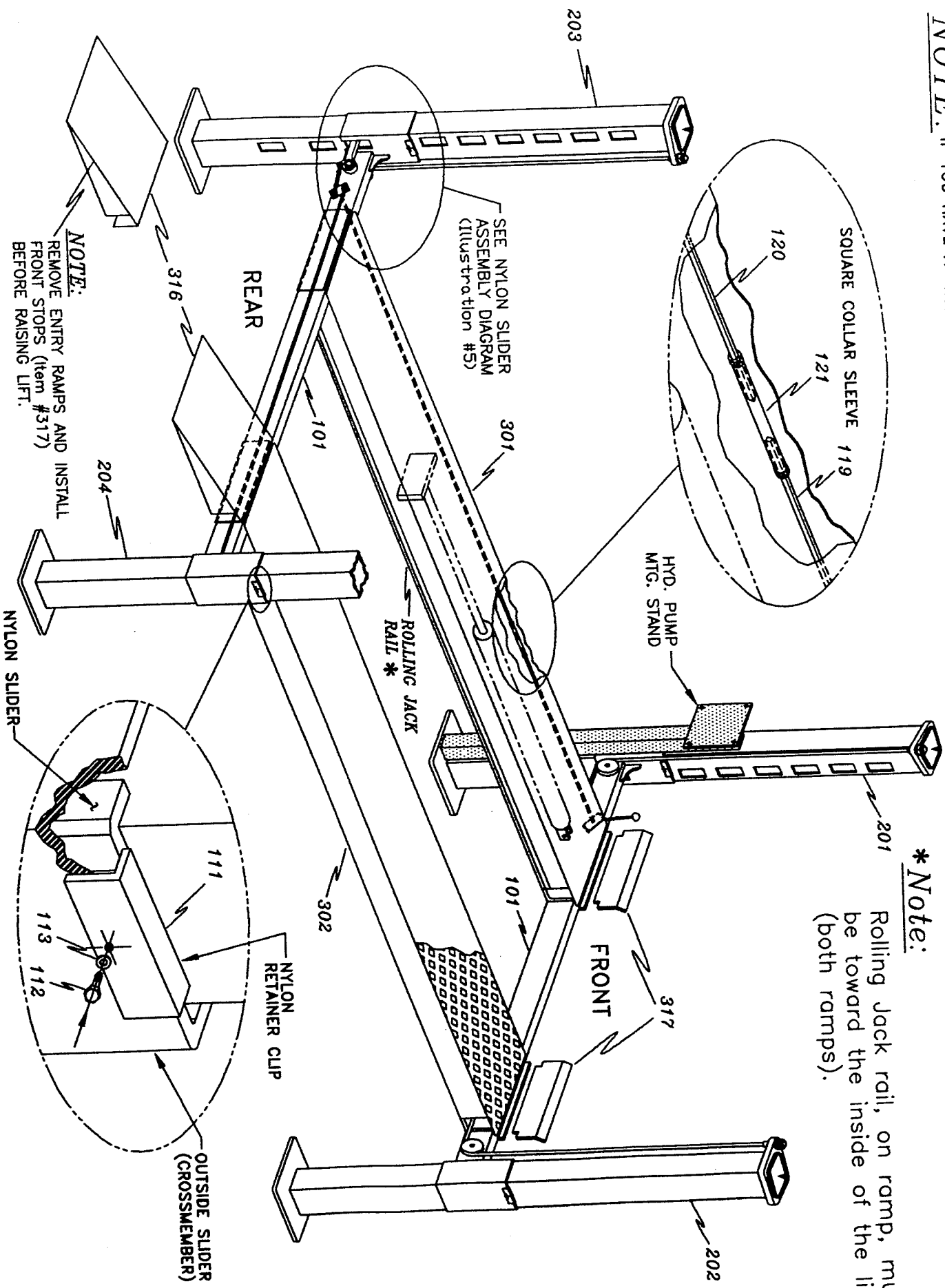
***Note:**
 Rolling Jack rail, on ramp, must be toward the inside of the lift. (both ramps).



7000# EXTENDED LIFT DIAGRAM (ASSEMBLED) - ILLUSTRATION #1

NOTE: IF YOU HAVE A "ROLLING JACK PLATFORM" or "HYDRAULIC JACK PLATFORM" - SEE ILLUSTRATIONS 12, 12A & 12B BEFORE ASSEMBLY.

***Note:**
Rolling Jack rail, on ramp, must be toward the inside of the lift. (both ramps).



7000# OVER-HEIGHT LIFT DIAGRAM (ASSEMBLED) - ILLUSTRATION #1

NOTE:
REMOVE ENTRY RAMPS AND INSTALL FRONT STOPS (Item #317) BEFORE RAISING LIFT.

SEE NYLON SLIDER ASSEMBLY DIAGRAM (Illustration #5)

HYD. PUMP MTC. STAND

NYLON SLIDER

NYLON RETAINER CLIP

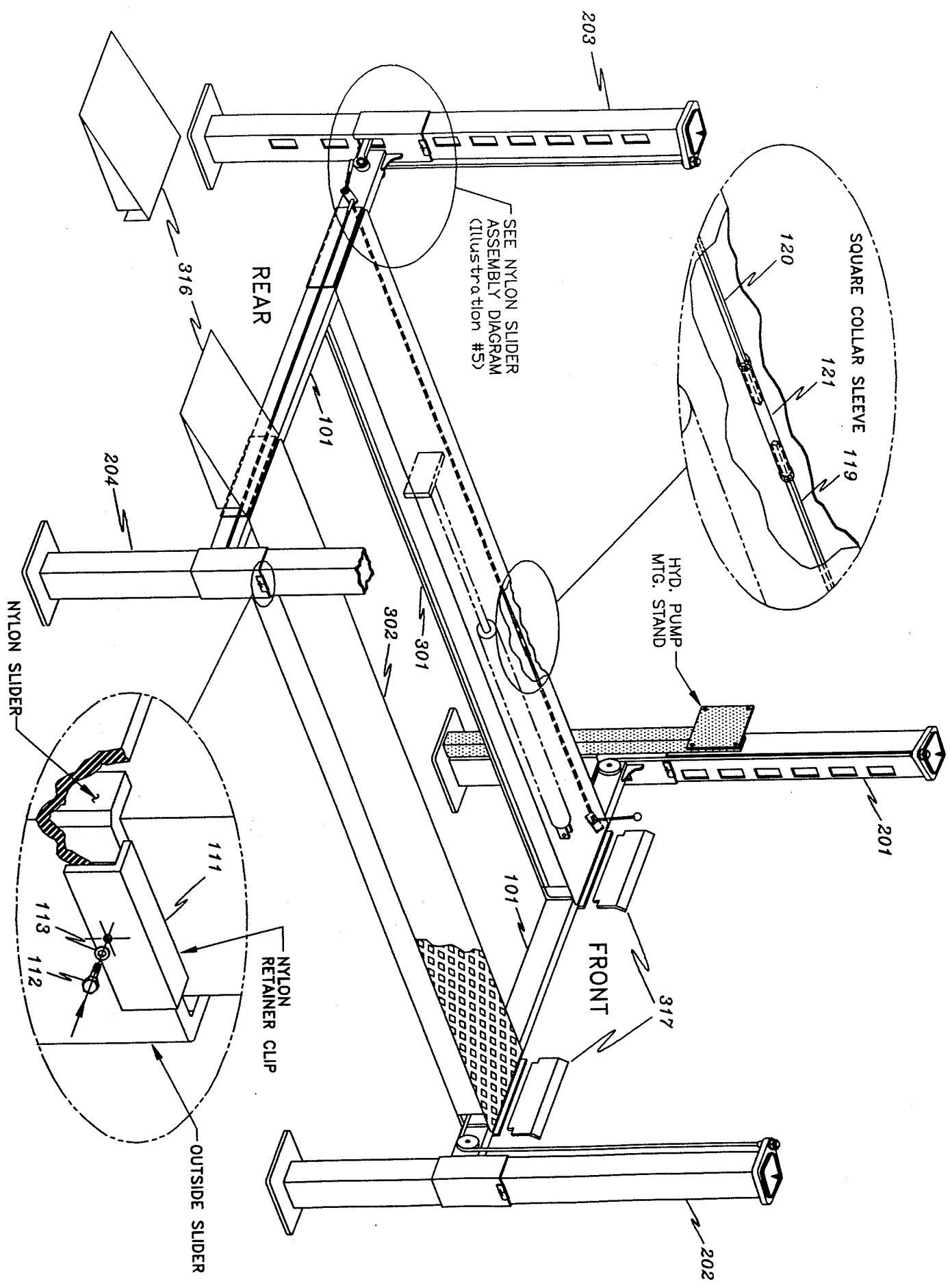
OUTSIDE SLIDER (CROSSMEMBER)

REAR

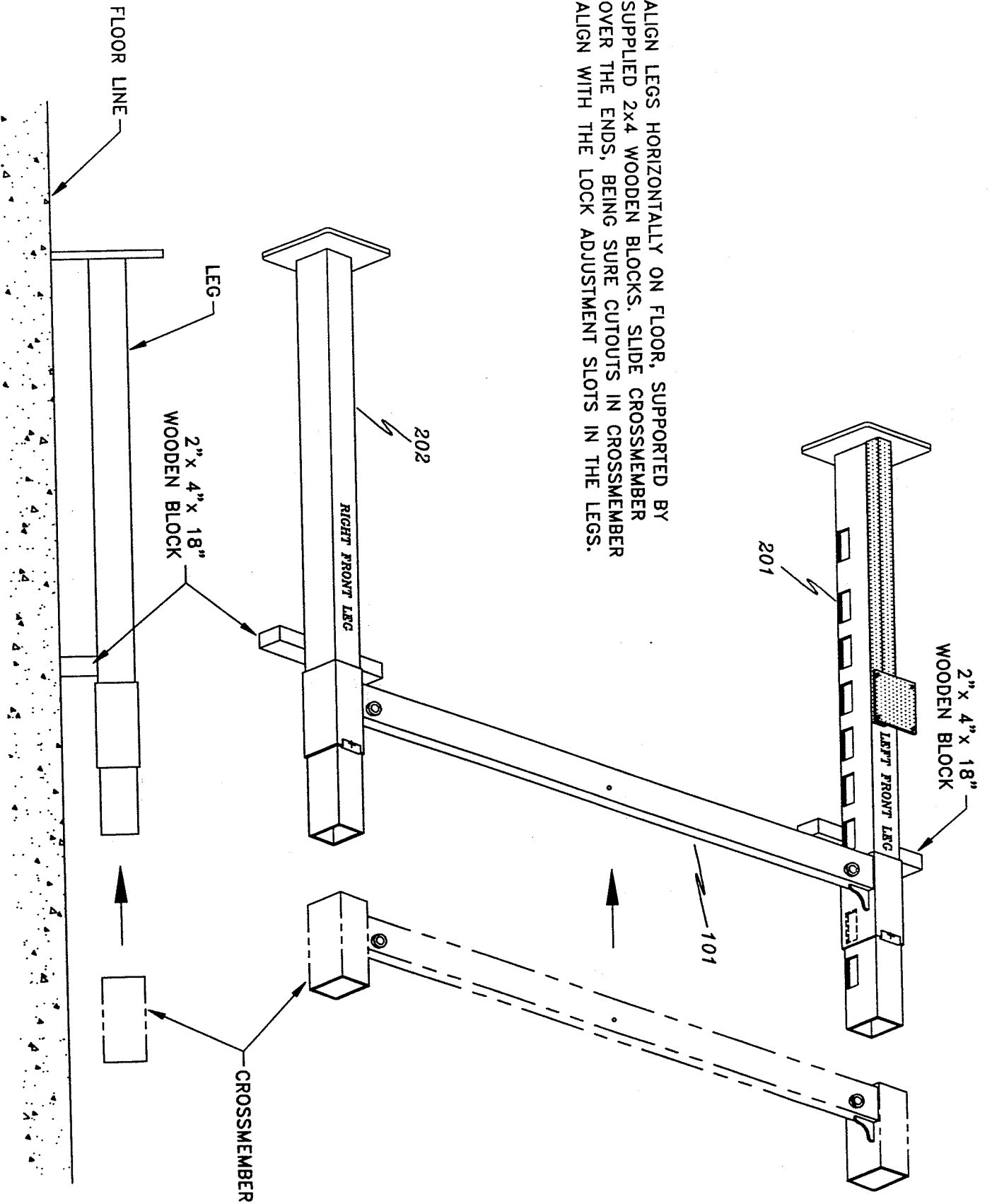
FRONT

ROLLING JACK RAIL *

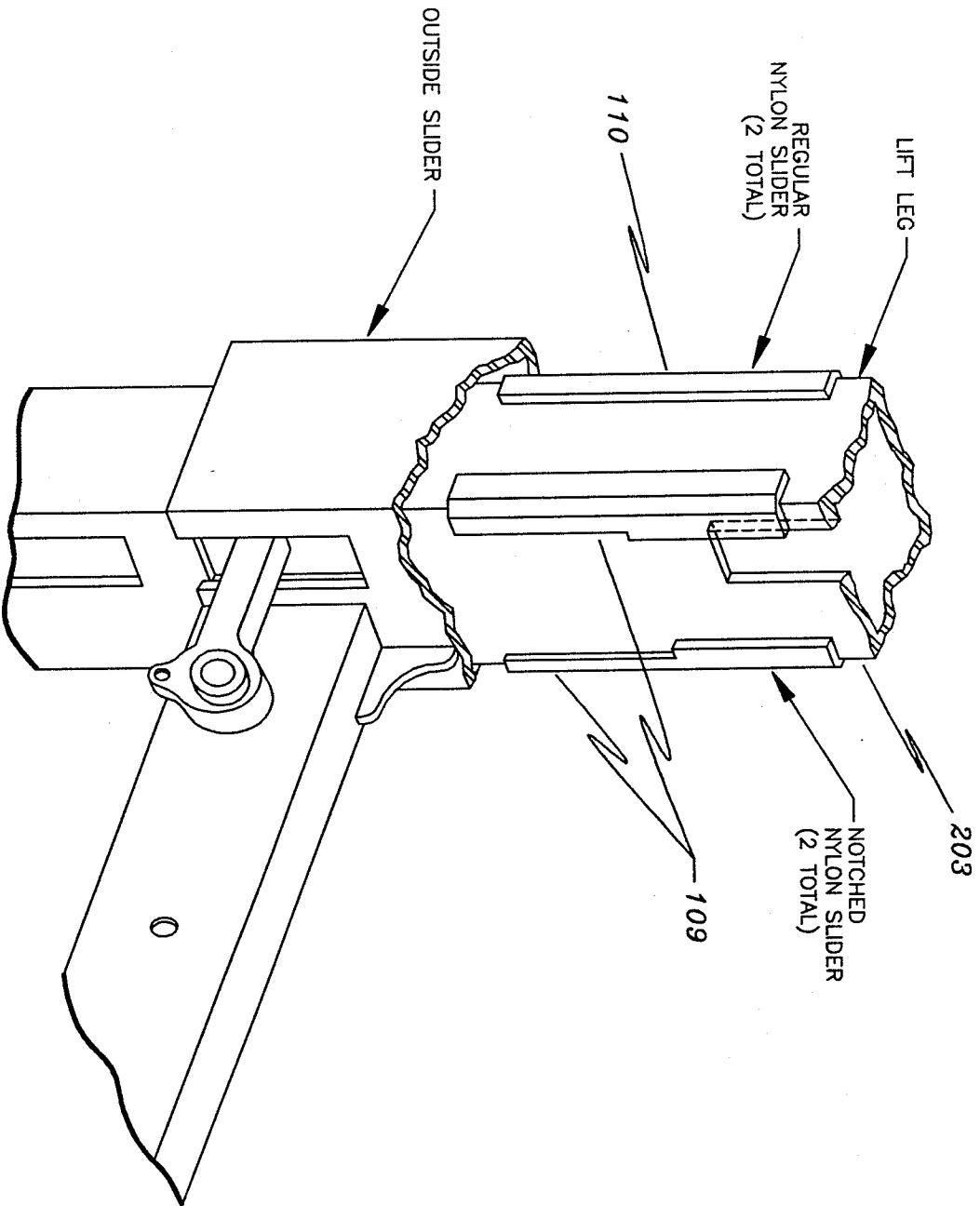
LIFT DIAGRAM (ASSEMBLED) - ILLUSTRATION #1



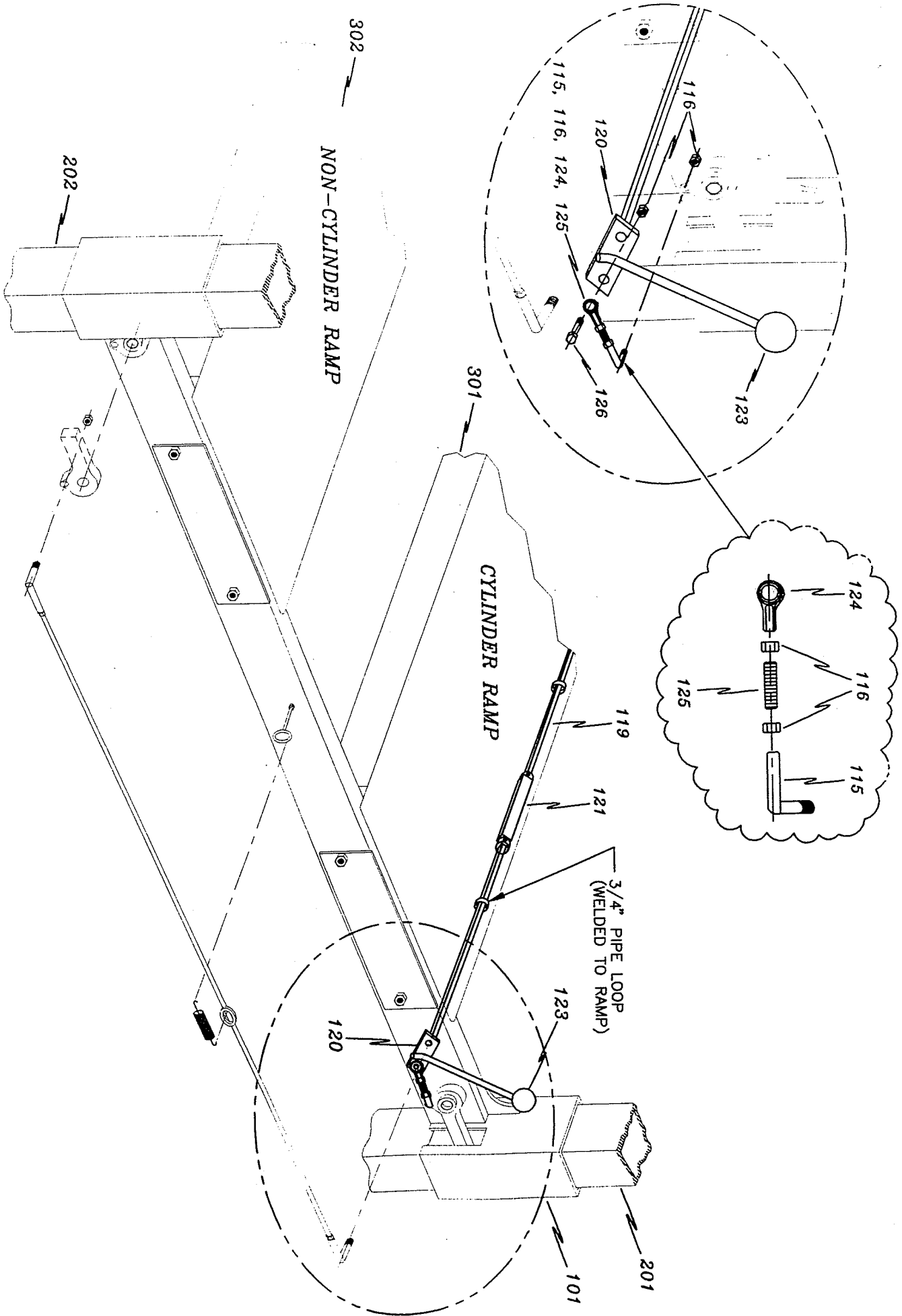
ALIGN LEGS HORIZONTALLY ON FLOOR, SUPPORTED BY SUPPLIED 2x4 WOODEN BLOCKS. SLIDE CROSSMEMBER OVER THE ENDS, BEING SURE CUTOUTS IN CROSSMEMBER ALIGN WITH THE LOCK ADJUSTMENT SLOTS IN THE LEGS.



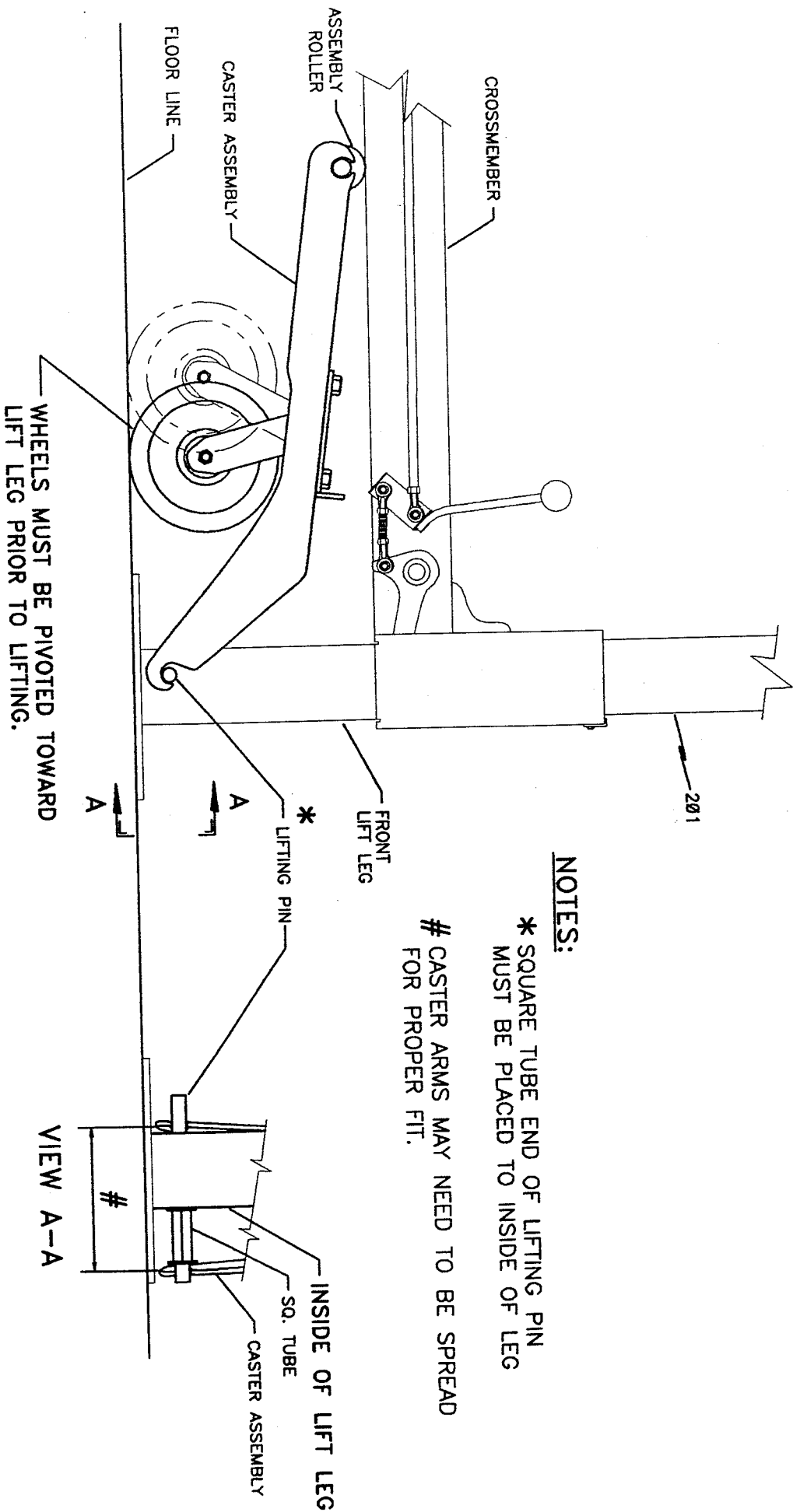
CROSSMEMBER TO LEG ASSEMBLY DIAGRAM - ILLUSTRATION #3
(FRONT ASSEMBLY)



NYLON SLIDER INSTALLATION DIAGRAM - ILLUSTRATION #5
 (LEFT REAR LEG SHOWN)



LONG/SHORT SQ. BAR SAFETY ROD ASSEMBLY - ILLUSTRATION #9



NOTES:

- * SQUARE TUBE END OF LIFTING PIN MUST BE PLACED TO INSIDE OF LEG
- # CASTER ARMS MAY NEED TO BE SPREAD FOR PROPER FIT.

CASTER LIFTING ASSEMBLY (OPTIONAL) - ILLUSTRATION #11

ROLLING JACK PLATFORM (OPTIONAL) - ILLUSTRATION #12

