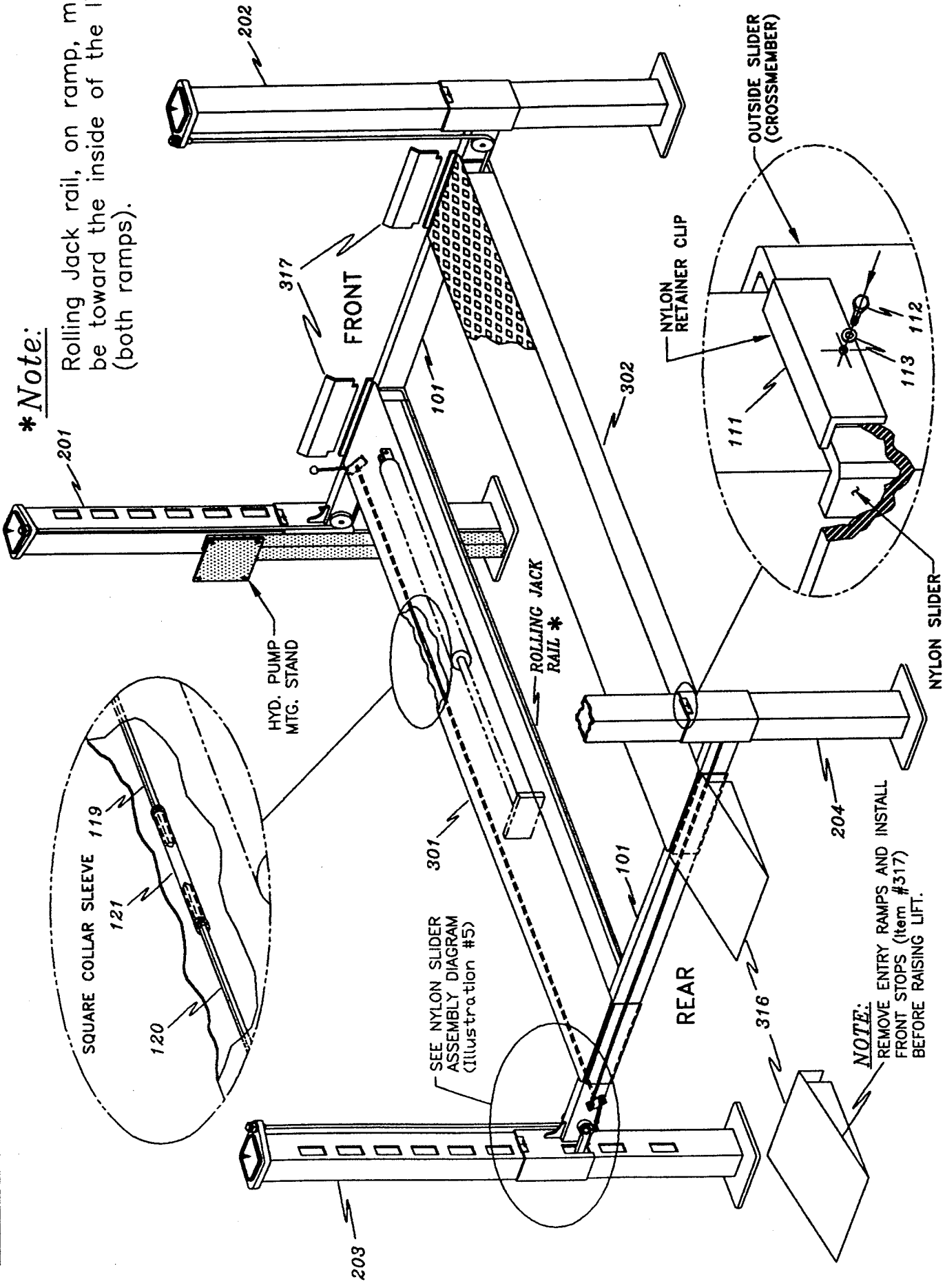


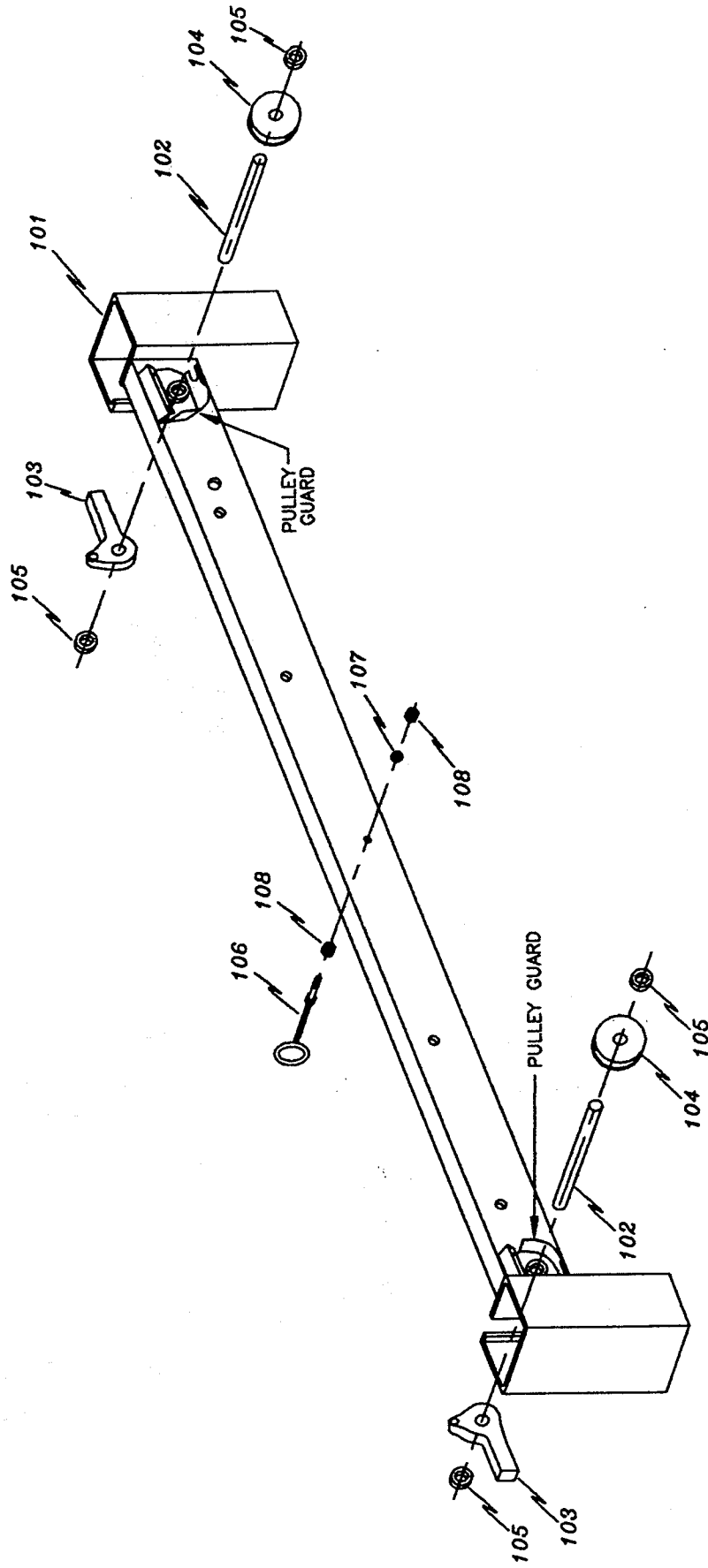
NOTE: IF YOU HAVE A "ROLLING JACK PLATFORM" or "HYDRAULIC JACK PLATFORM" - SEE ILLUSTRATIONS 12, 12A & 12B BEFORE ASSEMBLY.

\*Note:

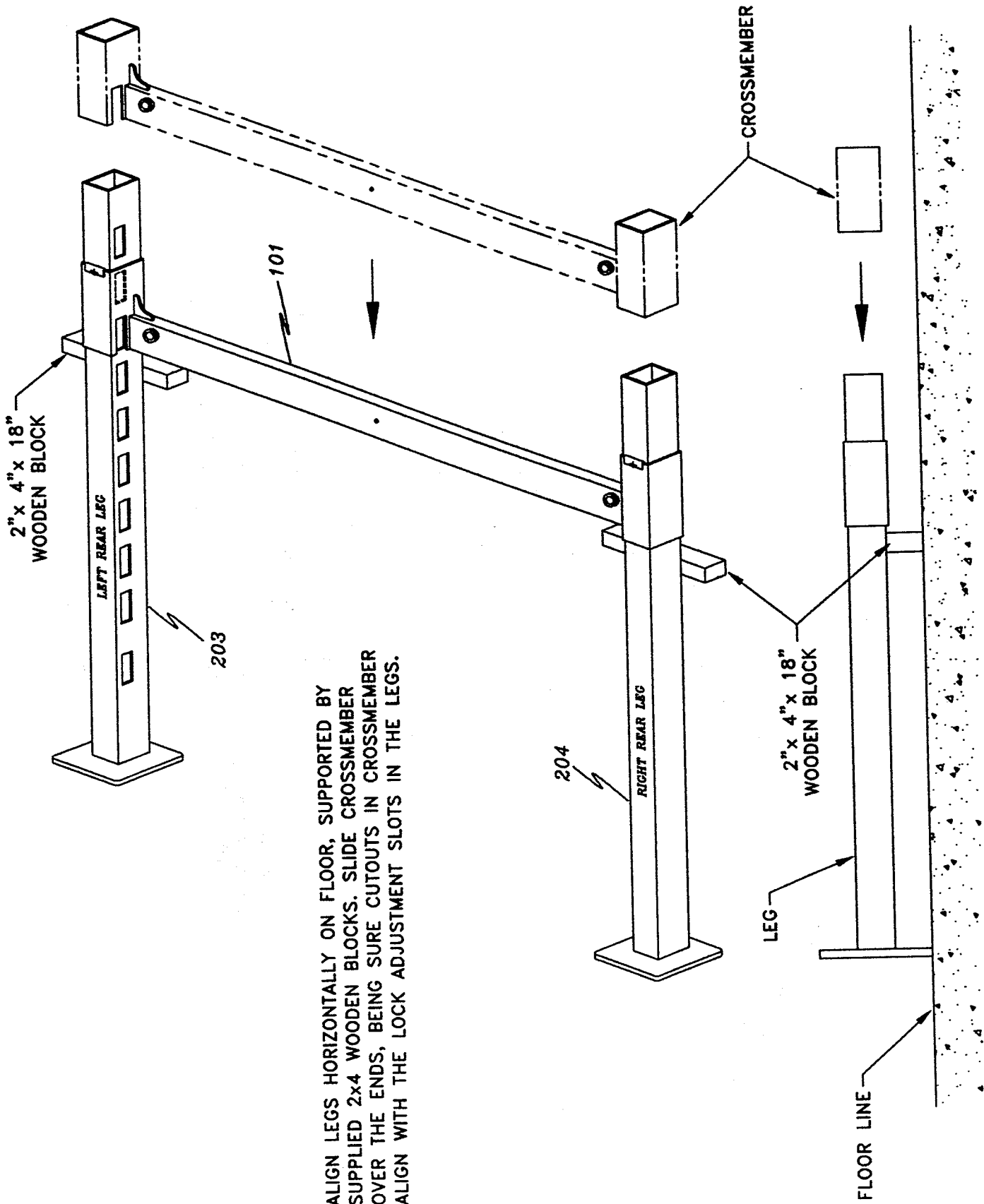
Rolling Jack rail, on ramp, must be toward the inside of the lift. (both ramps).



9000# LIFT DIAGRAM (ASSEMBLED) - ILLUSTRATION #1



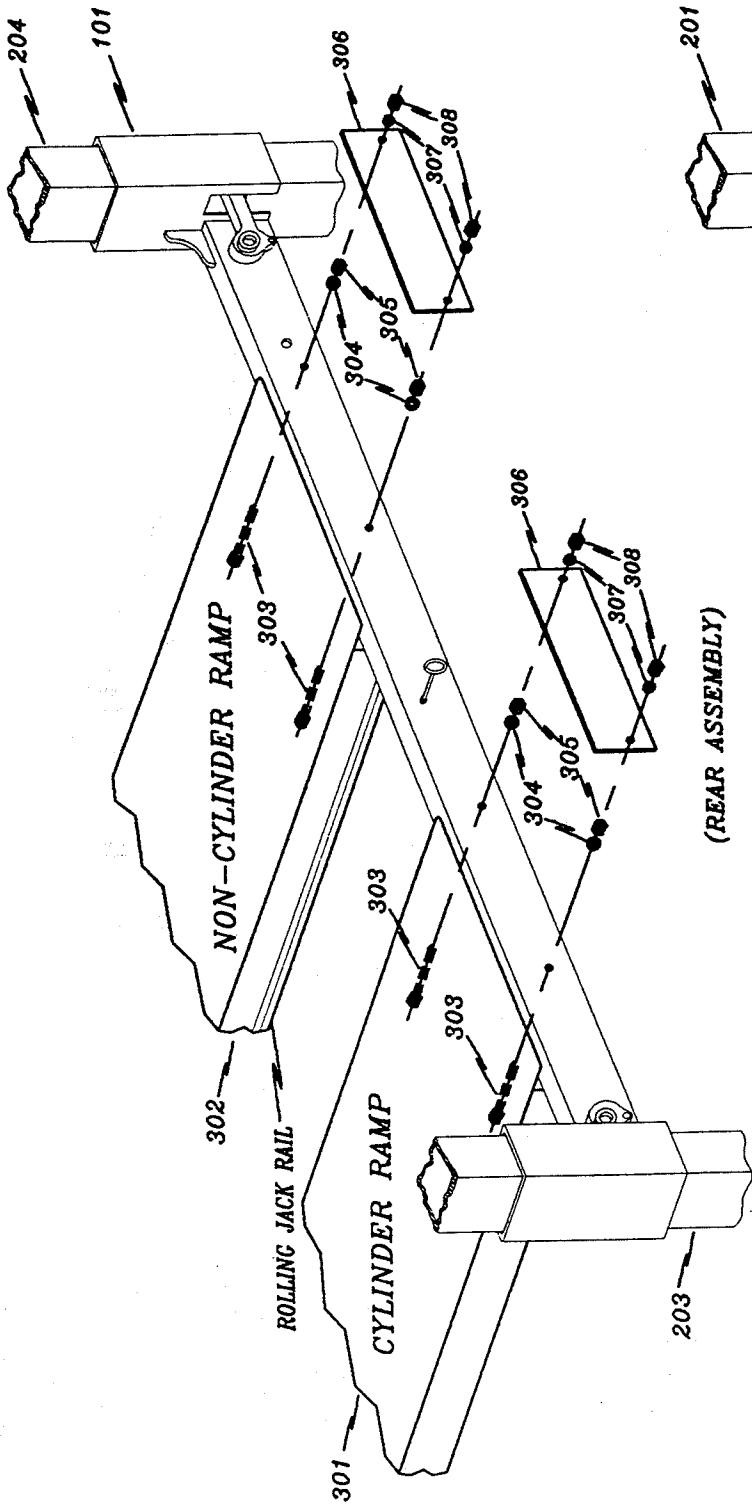
PRELIMINARY CROSSMEMBER ASSEMBLY (EXPLODED) - ILLUSTRATION #2  
 (BOTH CROSSMEMBERS)



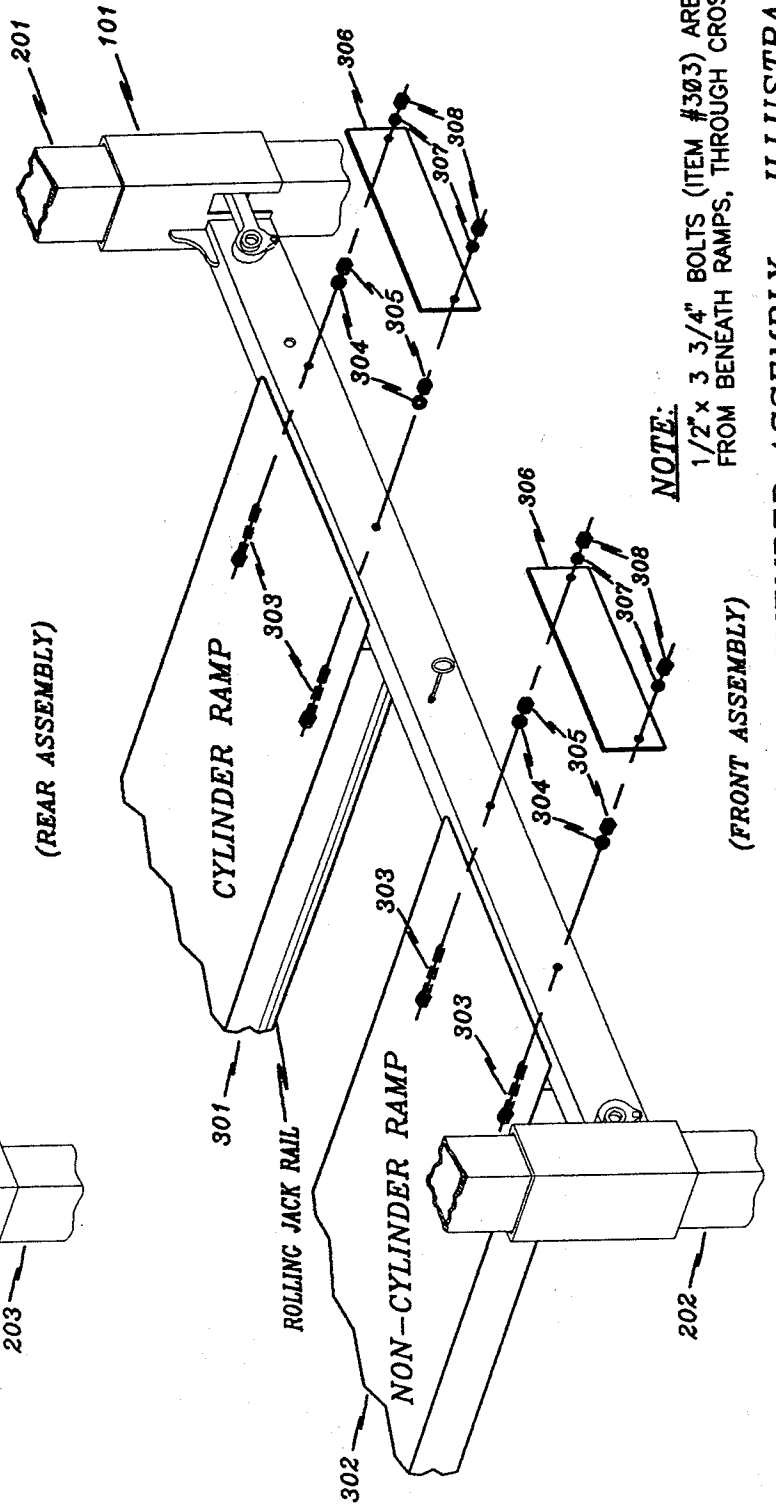
ALIGN LEGS HORIZONTALLY ON FLOOR, SUPPORTED BY SUPPLIED 2x4 WOODEN BLOCKS. SLIDE CROSSMEMBER OVER THE ENDS, BEING SURE CUTOUTS IN CROSSMEMBER ALIGN WITH THE LOCK ADJUSTMENT SLOTS IN THE LEGS.

CROSSMEMBER TO LEG ASSEMBLY DIAGRAM - ILLUSTRATION #4

(REAR ASSEMBLY)



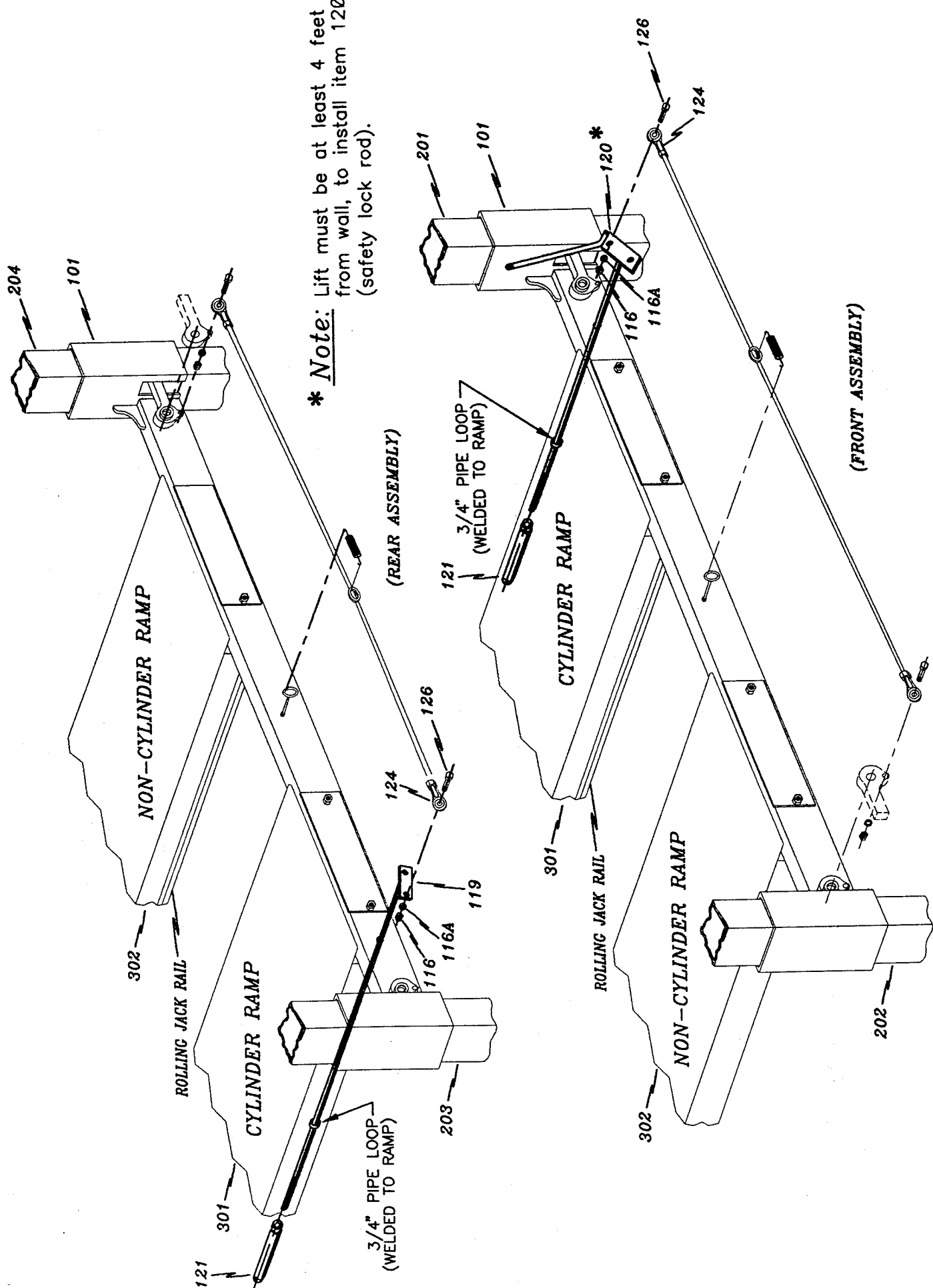
(REAR ASSEMBLY)



(FRONT ASSEMBLY)

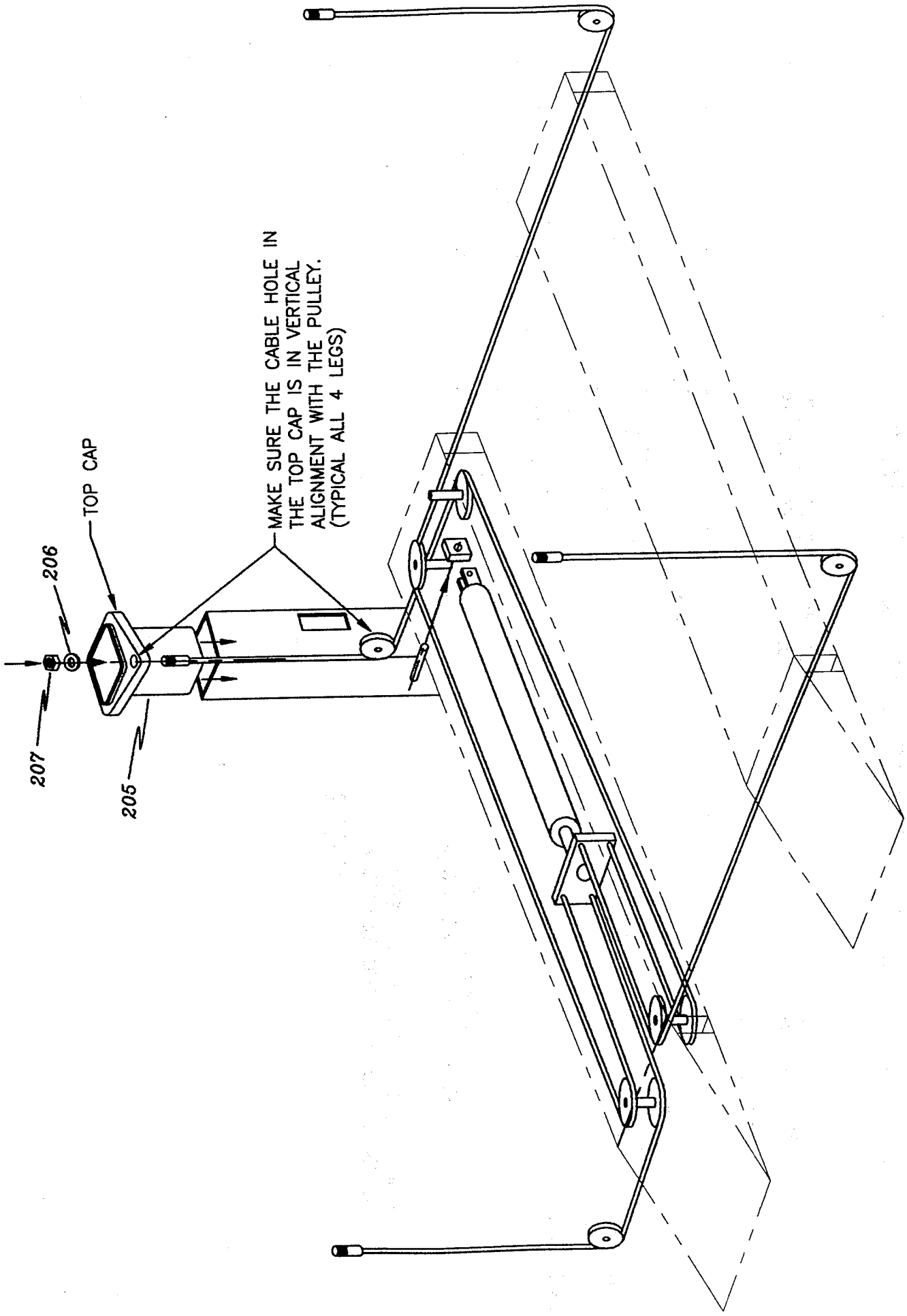
**NOTE:**

1/2" x 3 3/4" BOLTS (ITEM #303) ARE INSERTED FROM BENEATH RAMP, THROUGH CROSSMEMBER.



\* Note: Lift must be at least 4 feet from wall, to install item 120 (safety lock rod).

LONG/SHORT SQ. BAR SAFETY ROD ASSEMBLY - ILLUSTRATION #8



MAKE SURE THE CABLE HOLE IN THE TOP CAP IS IN VERTICAL ALIGNMENT WITH THE PULLEY. (TYPICAL ALL 4 LEGS)

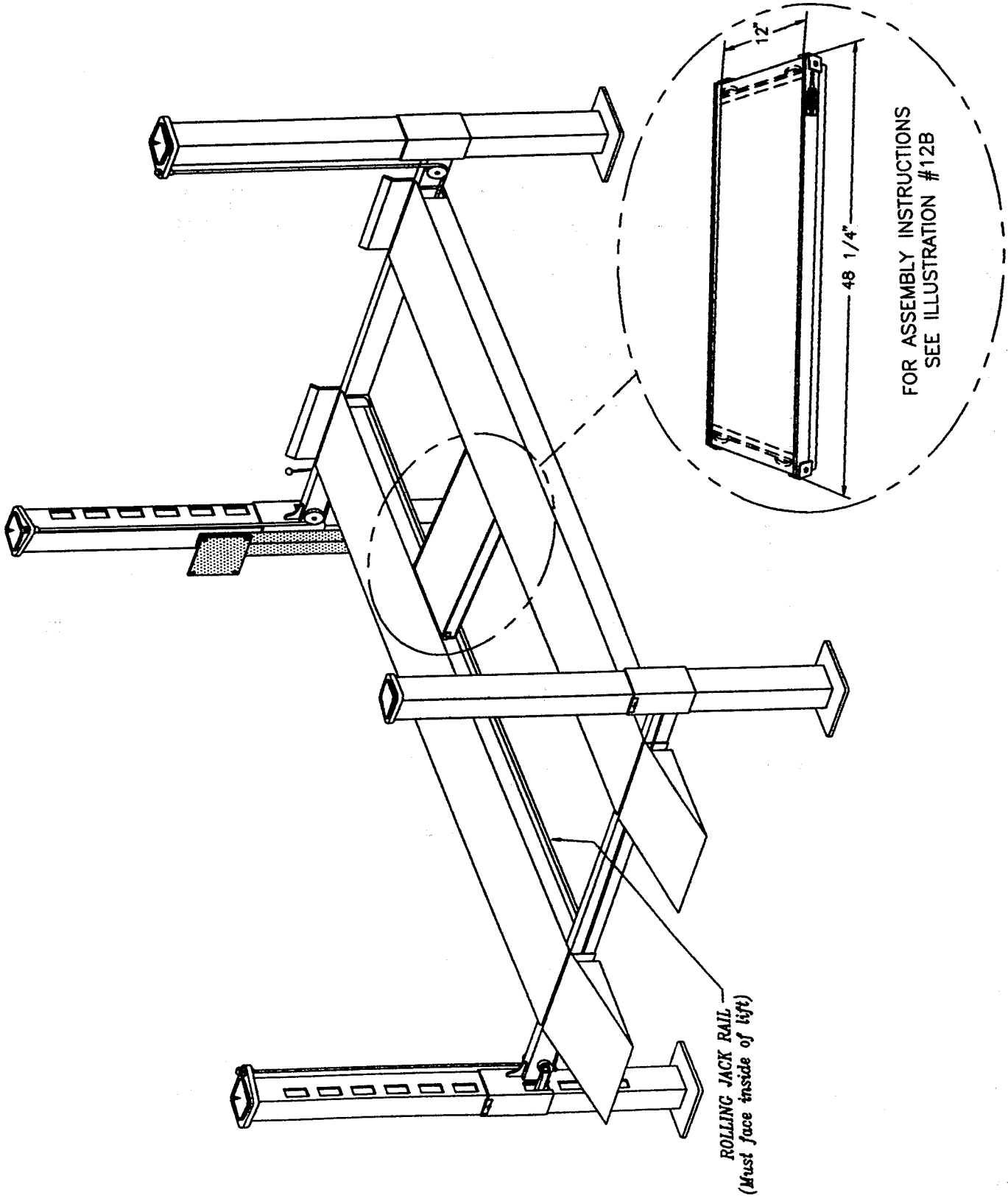
TOP CAP

206

207

205

CABLE THREADING DIAGRAM - ILLUSTRATION #10



ROLLING JACK PLATFORM (OPTIONAL) - ILLUSTRATION #12

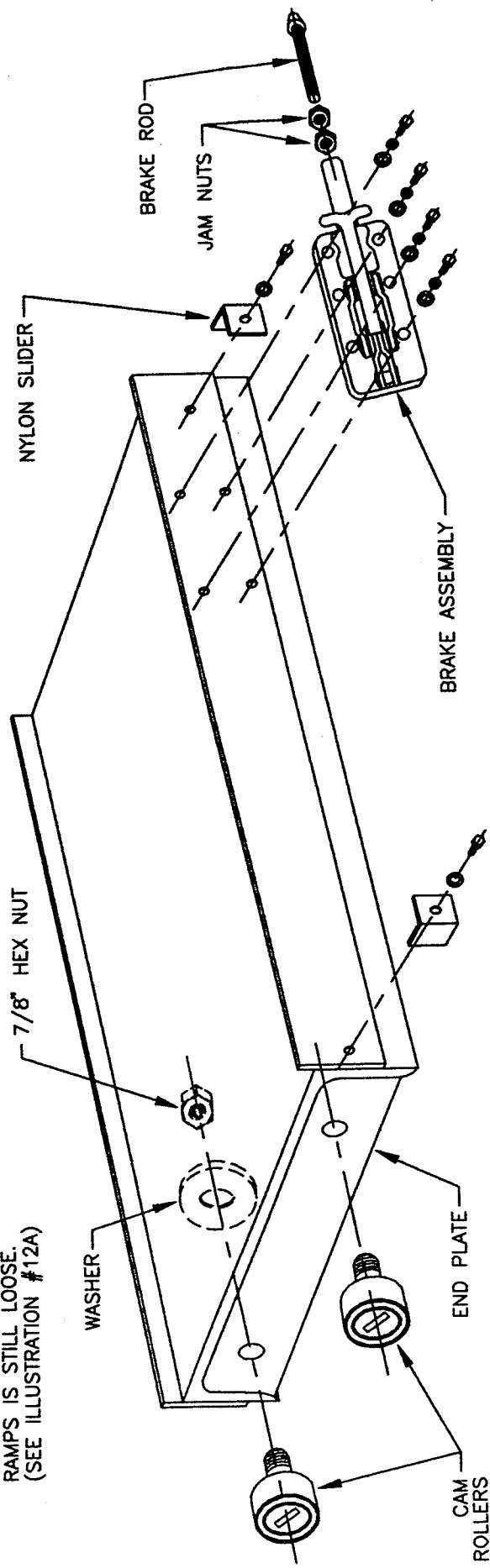
ASSEMBLY INSTRUCTIONS:

- 1.) ATTACH BRAKE ASS'Y. TO PLATFORM WITH FOUR (4) 1/4-20 x 1/2" HEX BOLTS, LOCK WASHERS & FLAT WASHERS.
- 2.) THREAD TWO (2) JAM NUTS ONTO BRAKE ROD. THREAD THE ROD INTO THE BRAKE ASSEMBLY.
- 3.) ATTACH FOUR (4) NYLON SLIDERS, ONE (1) TO EACH CORNER OF PLATFORM, WITH 1/4-20 x 1/2" HEX BOLT AND FLAT WASHER.
- 4.) ATTACH FOUR (4) CAM ROLLERS TO PLATFORM (ROLLERS MUST BE ON THE OUTSIDE OF END PLATE) WITH WASHER AND 7/8" HEX NUT. USE A STRAIGHT SLOT SCREWDRIVER, IN THE SLOT OF THE ROLLER, TO HOLD IT WHILE TIGHTENING NUT.
- \* 5.) AFTER PLACING PLATFORM ON LIFT RAILS, ADJUST THE BRAKE ROD SO IT WILL HOLD THE PLATFORM IN PLACE WHEN APPLIED.

TOOLS NEEDED:

- 7/16" WRENCH
- CRESCENT WRENCH
- STR. SLOT SCREWDRIVER

\* NOTE: PLATFORM MUST BE INSTALLED ON LIFT WHILE ONE OF THE RAMPS IS STILL LOOSE. (SEE ILLUSTRATION #12A)



ROLLING JACK PLATFORM ASSEMBLY DIAGRAM (OPTIONAL) - ILLUSTRATION #12B